



BR^{MS}₉₁₅DGES
A SCHOOL FOR EXPLORATION AND EQUITY

Danielle Scott, *Principal*
Emily Phillips, *Assistant Principal*

Nuts & Bolts



- Located on 4 floors of the Pacific Park Campus
- Currently, there are approximately 315 students enrolled
- Have grown to 5 classes in 6th grade (but will be back to 4 next year)
- Integrated Co-Teaching (ICT) Classes in all grades
- 3-year Advisory Program: Lower student-to-teacher ratio (12-15 students); helps students with the organizational, academic, and social challenges of middle school; builds a school-wide culture of community and acceptance
- Algebra I and Biology Regents in 8th Grade
- YONDR cell phone pouches

The Mission

Bridges: MS 915 is a diverse learning community dedicated to:

- *creativity*
- *problem-solving*
- *intellectual curiosity*
- *student voice and agency*

Our aim is to develop life-long learners and highly engaged citizens



Our Values: R.I.S.E. U.P. at Bridges

R

Responsible

- Come to school on time and daily.
- Be prepared for class.
- Be accountable for your actions and words

I

Inclusive

- Accept those who are different from you.
- Ensure that everyone feels valued and respected as an individual.
- Respect people's boundaries and privacy.

S

Safe

- Keep your hands to yourself. Refrain from play fighting.
- Walk in the hallway with awareness of others.
- Be where you are expected to be.

E

Empathy

- Show genuine interest, care or concern for others.
- Try to understand another person's perspective or circumstance (even when you disagree with this person)

U

Unique

- Realize your value.
- Embrace your true self

P

Persevere

- Push through challenging tasks.
- Ask for support.
- Be an active participant in class/the school community.
- Work towards being the best version of yourself.

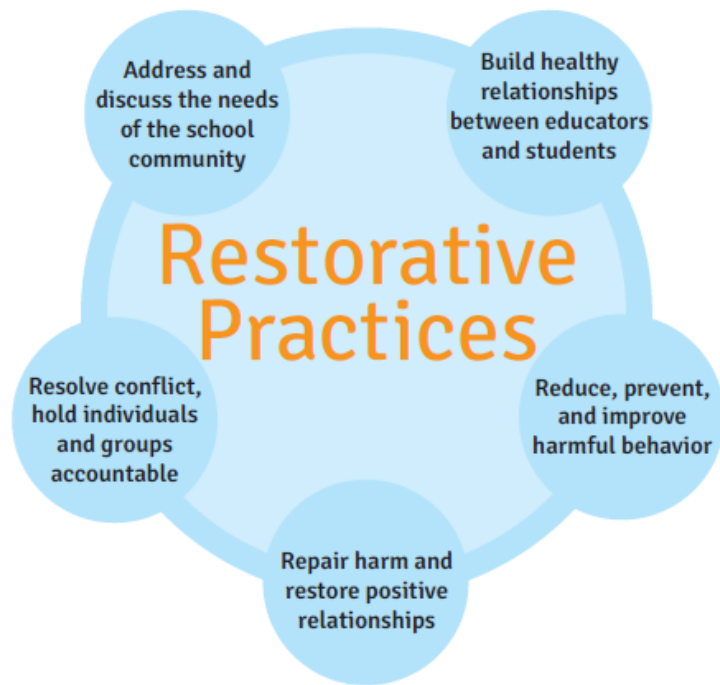


The Approach

At Bridges: MS 915, we believe in a progressive, culturally responsive pedagogy

- *acknowledge, validate, and incorporate cultural backgrounds of all students*
- *inclusive school culture*
- *restorative justice philosophy*

Our aim is to create a strong community for the benefit and support of all its members.



2024-2025 School Initiatives

- SEL (Social Emotional Learning): Advisory Curriculum: Morningside
- Bridges Leadership Council (SEL Innovation Award)
- Restorative Practices: Training for new staff members
- Illustrative Mathematics Curriculum (Constructivist Approach)
- Expeditionary Learning (ELA Curriculum)
- NYC Solves Math Coach
- NYC Reads ELA Coach
- MAP Assessments (ELA/MATH)
- IXL (Math Intervention Program)
- Tech and Typing Classes for 6th grade
- *New Biology Regents*

Explorations

Several times each year, students break from regular academic routines to engage in a deep, two-week study of one essential question

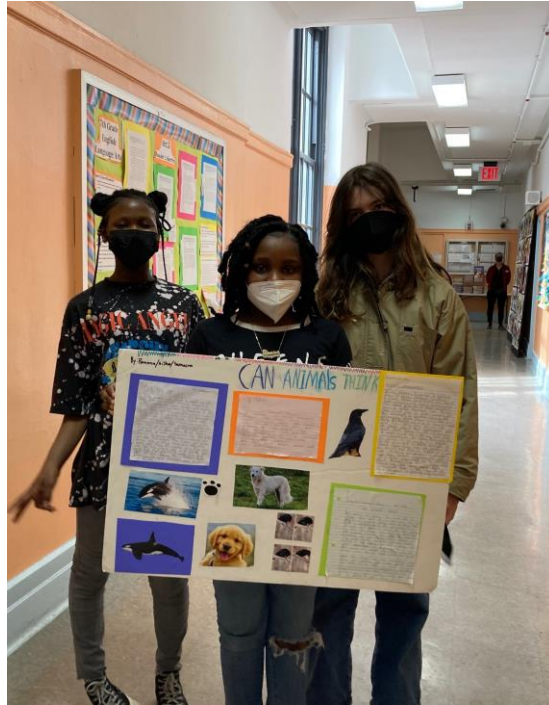
- Student- led Exploration (research, field studies, community visits, etc.)
- Culminating project designed to showcase learning

Sample Exploration Units of Study:

- Can art change the world?
- What is courage?
- Is our relationship to animals ethical?
- How does food connect and divide us?
- How can we create a more sustainable community at MS 915 and in NYC?



Explorations . . .



English Language Arts

Our focus is to develop life-long readers and strong writers who can communicate their ideas clearly. This year we have adopted the Expeditionary Learning (EL) curriculum. The chancellor mandated that schools adopt a research-based curriculum. Our district chose EL as the strongest and most culturally-sustaining.

Our curriculum builds deep knowledge by using content-rich, authentic texts on real-world topics in social studies, STEM, and literature. Students leverage their learning for social justice and environmental stewardship while building habits of character that help them contribute to a better world. In middle school, the emphasis shifts from fiction to non-fiction. Students read books such as: The Boy Who Harnessed the Wind, Hidden Figures, A Long Walk to Water, Patient Zero, Farewell to Manzanar, Maus, and The Omnivore's Dilemma.



Social Studies

We prepare students to be informed, enthusiastic, and critical citizens of the world who are able to make important links between the past, present, and future. Relevant texts, current events, and primary and secondary sources are central to our curriculum. We ask students to consider essential questions such as, “Who has the power?” and “Whose voice and perspective is included? Excluded?”

- 6th Grade: Ancient Civilizations
- 7th & 8th Grades: US History



People make choices. Choices make history.



Mathematics

We are committed to an approach to mathematics instruction that we call, “growth mindset math.”

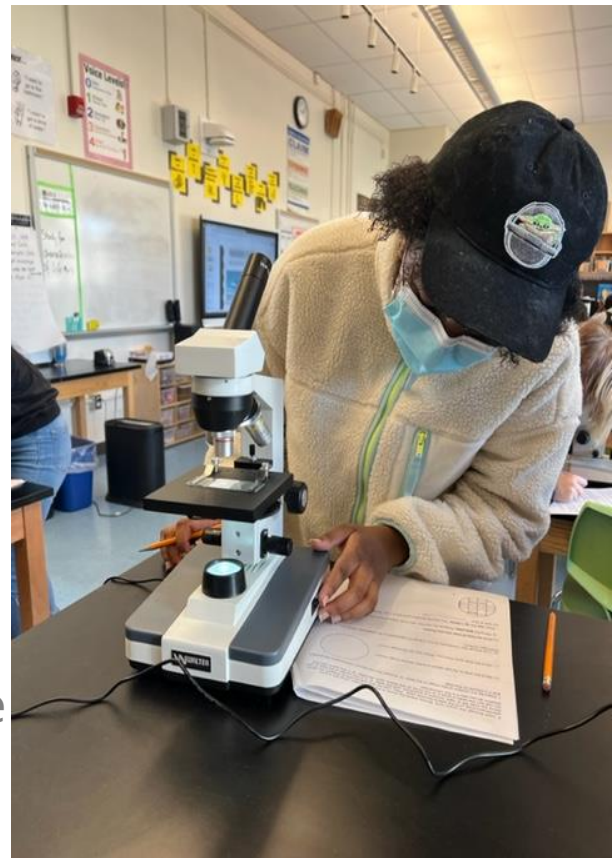
We use a progressive approach to mathematics instruction that favors conceptual understanding over rote computational work, in order to ensure deep understanding

- hands-on projects that engage and empower all students
- multiple-entry points allow all students to contribute thinking
- opportunity to sit for the Algebra I Regents exam in 8th grade

Science

We are committed to a hands-on approach to exploratory science. Our state-of-the-art science lab allows us to accommodate robust work and sophisticated science concepts.

- engage in hands-on investigations
- collaborate to pose and solve scientific questions
- learn literacy skills necessary to engage in science at the secondary level
- opportunity to sit for the Biology Regents in 8th grade



Special Area Subjects

- **Foreign Language:** Spanish, Grades 7-8 three to four days per week. Focus on developing oral language skills, reading and writing in Spanish, and analyzing authentic literature.
- **Music:** Students are learning music literacy skills that will help them to sing and play instruments. We are performing rhythms with drumsticks and will be starting ukulele soon.



Special Area Subjects Continued

- **Visual Arts:** All students in Grades 6-8 participate in hands-on studio art class multiple times per week, in which they have the opportunity to study and create art across various media.
- **Physical Education & Health:** Students engage in physical exercise through team sports, cooperative games, and developing personal fitness. Health class across grades taught by science specialists. We offer a Human Development and Sexuality residency in 7th and 8th Grade.



Special Education, English Language Learners, and Academic Intervention Services

- Integrated Co-Teaching (ICT) inclusion program
- SETSS
- Speech, OT, and PT
- English Language Learner Services
- Academic Intervention
- 12:1:1 Classes
- District 75 Partnership (Shared Instruction Program)

After School Program

- No-cost, full-time after school program with **CCM-FYI**
- Programming includes homework help, tutoring with MS 915 teachers, and enrichment clubs led by MS 915 teachers and staff, other after school program staff, and outside groups.
- League play for girls and boys basketball teams; Soccer Team; Running Club
- **Collaborations:** Cultured Kids Cuisine, Girl Scouts, and Concorde.



Clubs Offered

- Soccer Team: 2021 & 2022 Brooklyn Champs!
- Running Club
- GSA Club
- Boys/Girls Basketball Team
- Dance
- Musical Theater
- Art Club (HS Portfolios)
- Student Government
- Drumming & Ukulele
- Chorus
- Newspaper



Culture & Community

Welcome Days - 915 DAY - Thanksgiving Potluck - Culture & Diversity Day



Monster Mash – Gingerbread House Contest – Black Lives Matter Week



High School Admissions

- Guidance Counselor helps through the High School Admissions Process
- Portfolio Prep Assistance provided by Visual Arts teacher
- SHSAT Prep Courses offered (scholarships available through the PTA)
- Some NYC institutions MS 915 graduates attend:

Art and Design

Bard

Beacon

Brooklyn High School of the Arts

Brooklyn Latin

Brooklyn Tech

Edward R. Murrow

Frank Sinatra School of Arts

La Guardia

Millennium Brooklyn

Midwood

NEST + m

NYC iSchool

New York Harbor School

Professional Performing Arts

Stuyvesant



Admissions

We are an unscreened school for students who live in District 13 or who currently attend a District 13 school.

Learn More...

Visit our website:

ms915brooklyn.org

Contact our Parent Coordinator,

Sergio Borrero

sborrero@ms915brooklyn.org



SCAN ME

We hope you join our Bridges family next year!

